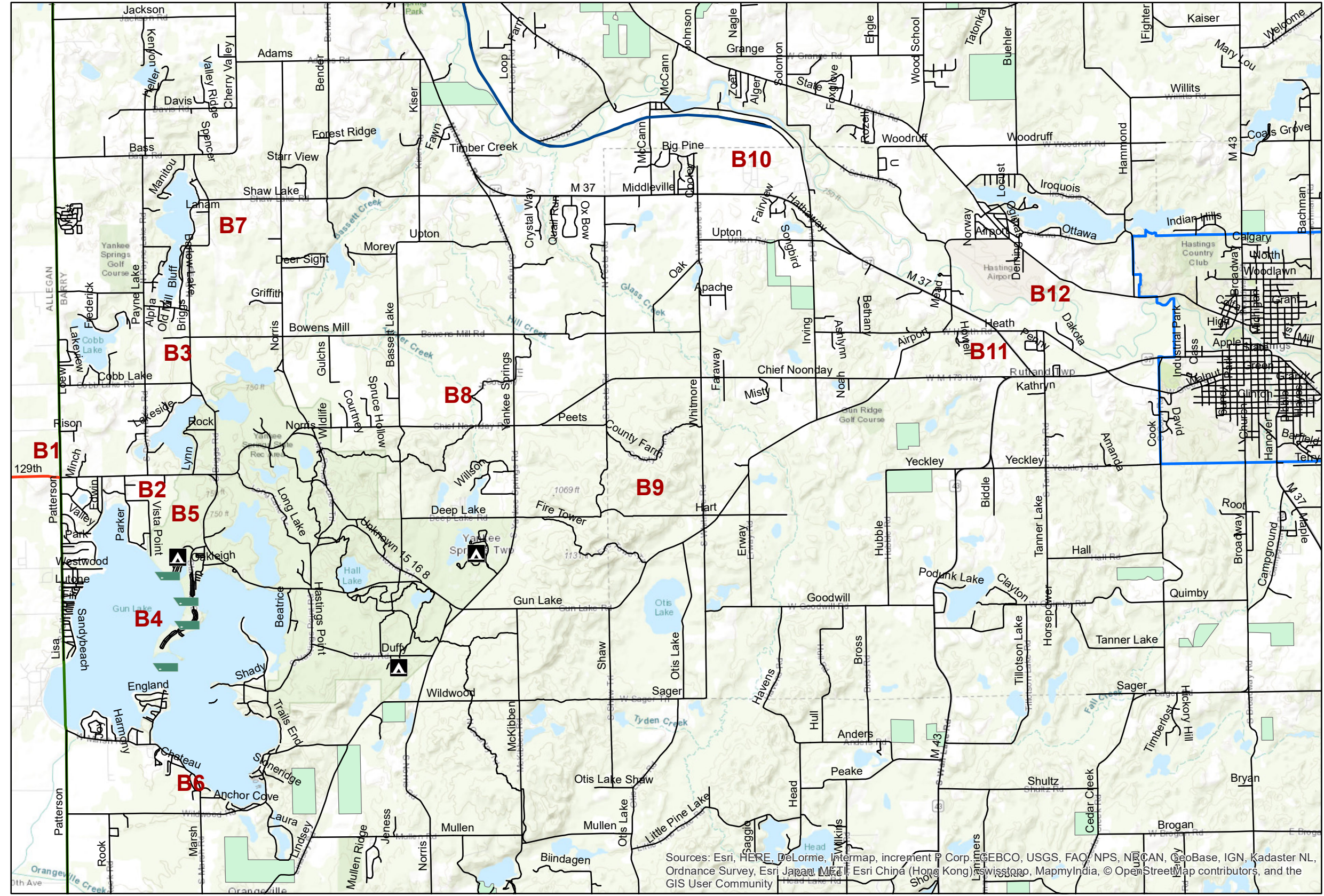


M-179 Pure Michigan Byway Corridor - Mid-Corridor

Map 3



Points of Interest

- B1 - Patterson Rd & M-179/Chief Noonday
- B2 - Yankee Springs Township Park
- B3 - Historic Bowens Mills
- B4 - Gun Lake
- B5 - Yankee Springs Recreation Area
- B6 - Bay Pointe Inn
- B7 - YMCA Camp Manitou-Lin
- B8 - North Country Trail (NCTA)
- B9 - Barry State Game Area
- B10 - Barry Expo Center
- B11 - Kellogg Community College
- B12 - Thornapple River

M179 - Mid-Corridor

- State Campgrounds
- Gun Lake Beach & Rec
- Michigan Railtrails
- Barry County Roads
- M-179
- Hastings
- Barry County Line
- Michigan Forest

Sources: Esri, HERE, DeLorme, Intermap, increment P Corp., GEBCO, USGS, FAO, NPS, NRCAN, GeoBase, IGN, Kadaster NL, Ordnance Survey, Esri Japan, Esri China (Hong Kong), Swisstopo, MapmyIndia, © OpenStreetMap contributors, and the GIS User Community

Source: Topographic basemap, West Michigan Regional Planning Commission; 1/27/2017